

MARKET REPORT
Daily Comment

Matif closed up €6.50. Currency/Weather! Soy hits 12 day high as Continued lack of rain in Argentina seen reducing yields & quality concerns in Brazil after persistent heavy rains. China bought 120,000t of US soybeans as they worry about the cold in central China. Sterling has weakened due to worries about the UK losing its AAA status, however when the US lost their status there was not much effect, time will tell! Brazil's harvest is 15% v 19% last year & 11% on ave.

Market Drivers

Positive Market Drivers - China set to Imp 61mil/t of Soybeans in 2013/14. EU 2012 OSR crop seen down @ 19mil/t. Veg oil usage to rise 3.2% (China/India), Ukraine OSR down 35%.

Negative Market Drivers - Brazil's Soy crop seen 82mil/t, Argentine crop seen @ 52mil/t both 2012/13 season. Global oilseed prod seen up 8% @ 471.5mil/t in '12/13. EU Debt worries.

UOM Opinion

Matif opened up €1.25. Dry weather brought Sprayers & Fert Spreaders into action on lighter land which was welcome relief. Heavier land may have to wait a day or two longer. The EU agreed an ethanol anti dumping tariff of 9.5% to try and slow cheap imports from the US, this will be challenged! Values this morning are creeping closer to £400exfm, may be selling a few pounds shy of this is wise as sometimes these figures trigger speculators to sell off and take their profits! Don't miss this opportunity!!

Spring Buybacks 2013
Linseed, Peas, Winter & Spring Bean

Pea buybacks are available for Marrowfats, Whites & Large blues with minimum prices. Beans are priced on min prems over fd bean values & Linseed is priced on 50% fixed & the balance open priced to be agreed. Linseed & Pea samples are also wanted with excellent ex farm prices paid with very few quality issues. Please call 01380 729200 to request sampling.

Spring Oilseed Rape seed

Ability (conventional), Mirakel (Hybrid) spring rape varieties are still available, however seed is getting tight. For more information call your AM or The Devizes office on 01380 729200.

UOM POOLS

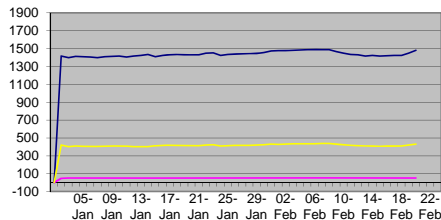
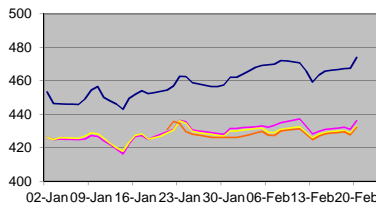
Harvest pool 2012 made £370 ex farm BEFORE bonuses, how did you get on with your harvest values? Harvest pool 2013 closes on the 31st March 2013. Storage for harvest 2013 is available and can be booked at very good rates, this gives you the ability to keep combines turning at harvest and take advantage of higher prices later in the season. Talk to your Area Manager for more details or call 01380 729200.

PLEASE NOTE THAT ALL PRICES ARE INDICATIVE ONLY, PLEASE CHECK WITH OFFICE BEFORE PRICING

Oilseed	Daily Change	Mar-13	Apr-Jun13	As/ave 13	Sep-13	Oct-Dec 13	Jan-Mar 14	Apr-Jun 14	As/ave 14
Delivered OSR Seed Prices									
Erith	£7.00	407	409	371	34	377	379	381	
Liverpool	£7.00	407	409	371	34	377	379	381	
Chettisham	£7.00	405	407	369	32	375	377	379	
Hull	£7.00	403	405	367	30	373	375	377	
Berwick/Tees port	£7.00	401	403	365	30	371	373	375	
Dundee	£7.00	401	403	365	30	371	373	375	
Peterhead	£7.00	401	403	365	30	371	373	375	
Inverness	£7.00	398	401	363	27	368	370	372	

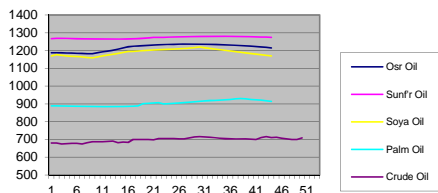
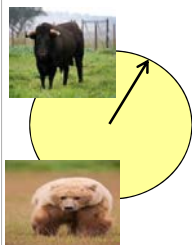
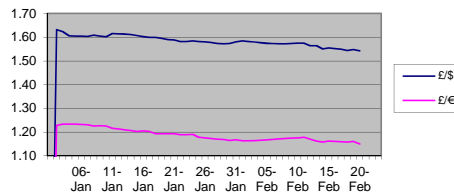
FOR EX FARM PRICES DEDUCT ACTUAL HAULAGE RATES TO DESTINATION

Linseed Ex FM		Mar-13	May-13	Sep-13	Oats	May-13	As/ave 13	Nov-13	Dec-13
Min 38% oil, Max 9% Moisture	K/Hant/Ox	Check	Check	Check	Crewe d/d	£204	POA	POA	POA
Max 2% Admixture	Lin/Nor	Check	Check	Check	Bedford d/d	POA	POA	POA	POA

CBOT Soya Bean, OIL & Meal \$

Matif Daily Close €


Chicago Futures	Month	Change
Soybeans (\$/bu)	Mar-13	0.32
Soya oil (cts/lb)	Mar-13	0.62
Soya meal (\$/T)	Mar-13	12
Rape Meal (ex mill)	Jan-13	£0

Beans D/d	Jan-Mar13	Apr-Jun13	Sep-13	Oct-Dec13	Jan-Mar13
Chettisham	£307.0	£310.0	POA	£234.0	POA
Tilb/lps	POA	POA	POA	POA	POA
Nantwich	POA	POA	POA	POA	POA
Atherington	POA	POA	POA	POA	POA
S'oton	POA	POA	POA	POA	POA

Weekly Oil Comparison \$

Barometer Arrow

Forex Daily record

Disclaimer

This communication represents the originator's personal views and opinions, which do not necessarily reflect those of the company. If you are not the intended recipient or the person responsible for delivering the email to the intended recipient, please notify the sender and delete the message and all copies from your Computer system immediately.