

Supplied by:
Farm Equip

SUPERIOR GRASS & FODDER CROPS 2017

HIF Seeds

ENGLAND & WALES

Mobile: 07881 804442





HF Seeds have been at the forefront of grass seed innovation for almost 60 years. Farmers have come to rely on HF Seeds for high quality seeds leading to excellent livestock performance, whether cut or grazed.

The very best varieties, in terms of dry matter production, sward density, winter hardiness and feeding value are carefully selected to combine together into our famous grass seed mixtures. You can feel confident that purchasing an HF Seeds mixture is a good start to establishing a new grass sward, leading to the most cost effective means of ruminant animal production.

HF Seeds have been part of DLF since 1996. DLF are the world's largest grass and clover breeder with over 800 employees worldwide, of which 80 are directly employed in grass breeding. This grass breeding and development programme is at the core of what we do and what we have done since 1906. In recent years we have developed varieties with higher levels of digestible fibre – Digestible neutral detergent fibre (DNDF) for greater live weight gain per kilogram of dry matter eaten as well as seed treatments to improve the success of overseeding and deeper rooting more stress tolerant festuloliums or Advanced™ Grasses.

Hailes Farm at Didbrook in Gloucestershire is the home of our UK trials work. Here we have 8500 grass and clover plots on trial as well as over 70 mixture trial plots. This allows us to assess how well individual varieties perform when sown along with other varieties and species. In Ireland we have 2200 plots sown at our Faithlegg site near Waterford, as well as 150 mixture plots, all of which adds to the information used to formulate our mixtures.

With the backing of DLF, HF Seeds continues to go from strength to strength.



Contents

| | |
|--------------------------------|----|
| Mixture Quality | 04 |
| Forage Quality | 05 |
| Mixture Selector | 06 |
| Short Term Mixtures | 08 |
| Medium Term Mixtures | 09 |
| Long Term Mixtures | 13 |
| Specialist Mixtures | 15 |
| Overseeding Mixtures | 18 |
| High Clover & Organic Mixtures | 20 |
| Grass Varieties | 22 |
| Root & Fodder Crops | 24 |
| Stewardship | 26 |
| Greening & HF Countryside | 27 |

Leading the field for over 50 years

Sowing grass seed is an investment for the future, so it is important to try and get it right and I have used HF Supersward for many years. It consistently gives me a dense productive sward providing two quality cuts of silage and aftermath grazing for cows and calves in the autumn (this years sow out is after peas and it is looking tremendous). I will continue to use HF because I have confidence in their product.

Hugh Dunlop
Mains of Glasswell,
Kirriemuir



HF Mixture Quality

Good grass mixture design begins with the assessment of individual variety characteristics and then uses this information to combine mixture components in different proportions to produce the best possible mixture for the intended duration and purpose of the final sward.

High yields of dry matter will always be one of the most important considerations, along with sward density and digestibility. It is important to also consider the ability of the mixture to perform under stress, drought or otherwise, its palatability and how resistant the mixture is to certain diseases – such as crown rust, mildew and increasingly dreschlera. Winter hardiness and density are the two main contributing factors leading to good persistency. HF Seeds mixtures are renowned for their persistency across harsh northern areas for their longevity due to consistent performance, for many years.

04

Germination

There is a minimum germination for all certified seed used in the UK, but these standards are actually quite low. HF Seed varieties are selected from our own seed stocks that are at least 10% higher germination than the UK certification minimum standard. More live seeds in every bag is very important in producing dense, long lasting swards.

| Species | UK Minimum Germination | HF Minimum Germination |
|--------------------|------------------------|------------------------|
| Italian Ryegrass | 75.0% | 90.0% |
| Perennial Ryegrass | 80.0% | 90.0% |
| Timothy | 80.0% | 90.0% |

Purity

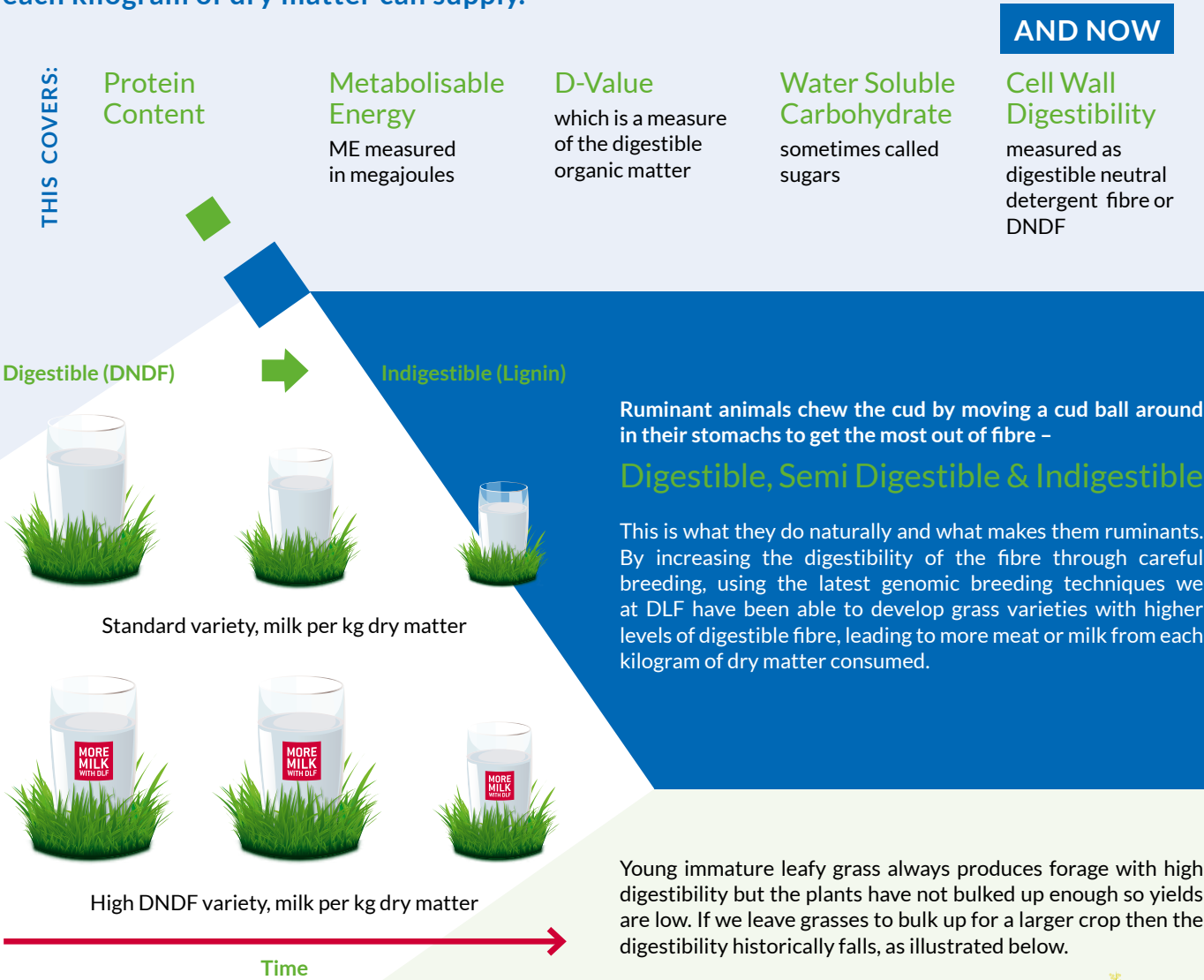
UK grass seed certification also allows the possibility of the presence of relatively high levels of serious grassland weeds. At HF Seeds we impose our own freedom from weeds standards, which are unequalled elsewhere.

This table shows the potential number of weed seeds which could be sown (per acre) each time a field is reseeded. The advantages of HF Seeds rigorous purity standards are easy to see.

| Possible Weed Seed Numbers per acre | UK Minimum Purity Standard | HF Minimum Purity Standard |
|-------------------------------------|----------------------------|----------------------------|
| Docks | 1,250 | 0 |
| Couch | 30,000 | 2,500 |
| Blackgrass | 25,000 | 2,500 |

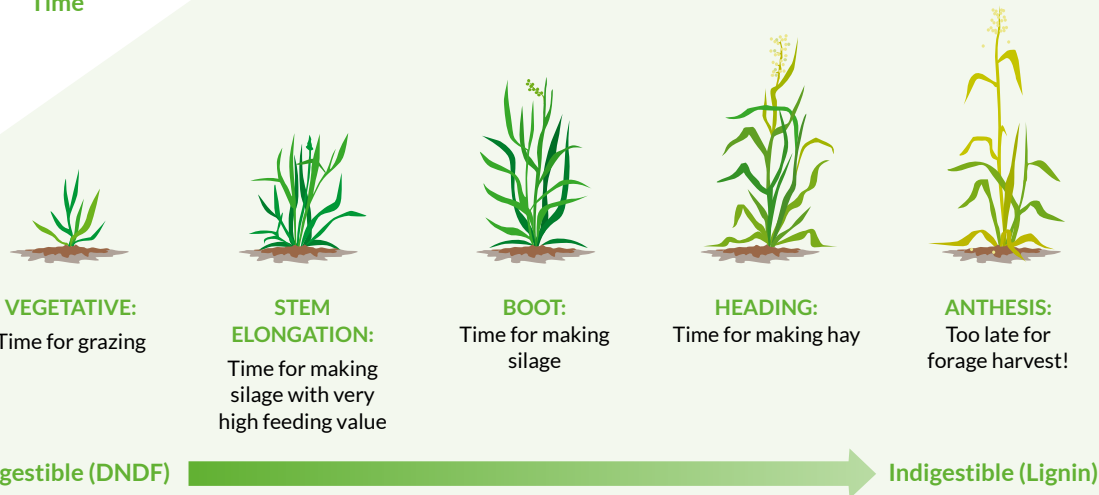
HF Forage Quality

The forage quality of grass refers to a range of measurements for different aspects of what each kilogram of dry matter can supply.



05

MORE MILK WITH DLF



High DNDF varieties do not suffer the same reduction in digestibility as the grass plants mature and so we are able to get the increased yield as plants bulk up, without as big a reduction in digestibility as seen with conventional varieties. HF Seeds have now included high DNDF as one of our variety selection criteria.

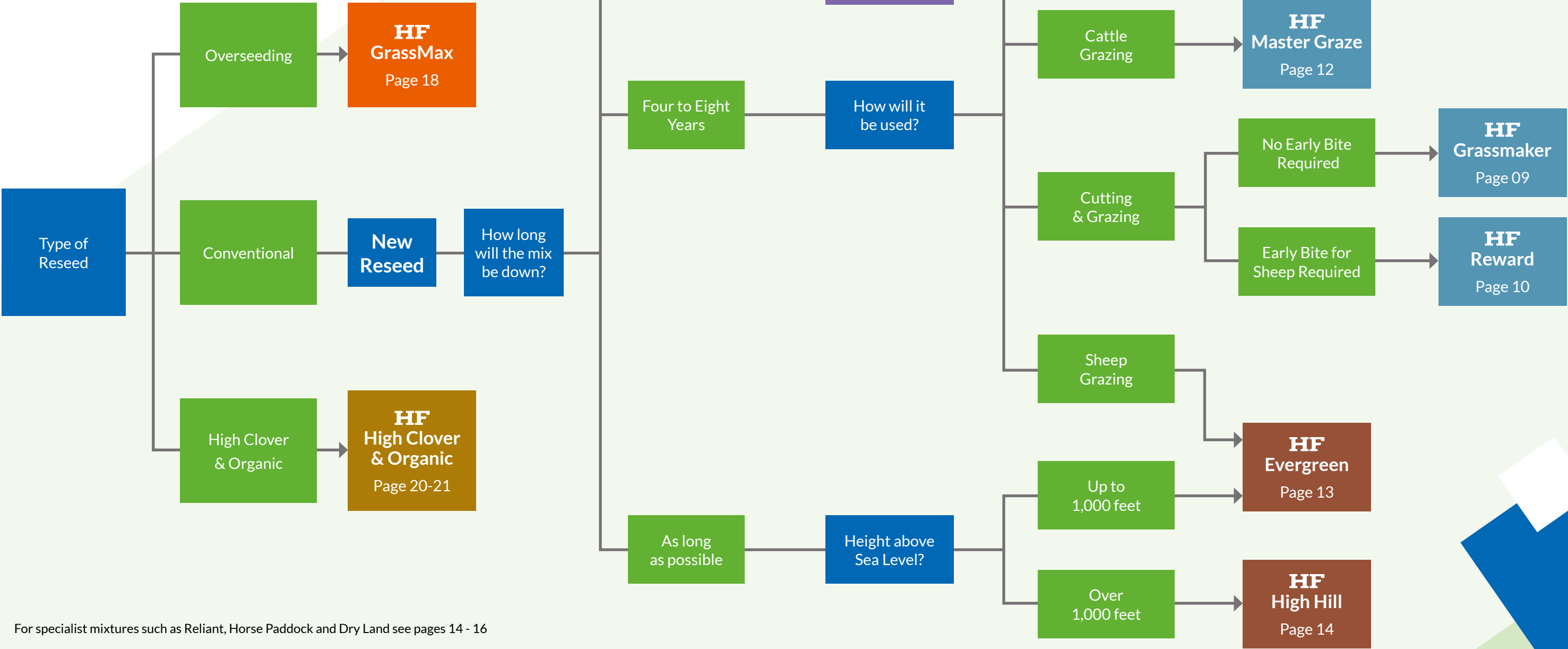
HF Mixture Selector

HF mixtures are designed and formulated to meet specific sward uses.

Significant differences between mixtures are not always obvious but even small differences can change the way in which the final sward behaves. Selection of the wrong mixture will inevitably mean that the sward will not perform up to expectations simply because it is the wrong mix for the job.

The HF mixture selector is designed to help answer many of the common questions in mixture selection, however it is not possible to cater for every situation and if in doubt contact HF Seeds for further advice.

01506 674800 FOR ALL YOUR FORAGE SOLUTIONS



For specialist mixtures such as Reliant, Horse Paddock and Dry Land see pages 14 - 16

DISCLAIMER
Any information provided in this catalogue is given in good faith and to the best of our existing knowledge. Any advice should therefore be taken as a general guide only and not relied upon for all conditions and circumstances. HF Seeds cannot accept any legal liability for information given in this guide. In any instance where there are shortages of specified varieties HF Seeds reserves the right to substitute equivalent varieties.

HF Yielder

1 to 2 year mixture

MERIBEL
Italian Ryegrass

KIGEZI 1
Tetraploid
Italian Ryegrass

PERSEUS
Advanced™ Italian Ryegrass

Mainly Cutting Mixture

Yielder is designed for maximum yield over two full production years

- The top yielding mixture
- High tetraploid content ensures high quality silage
- Capable of 3 or 4 quality cuts per year
- Not suitable for undersowing a cereal as too aggressive

Recommended sowing rate:
13-14 kg/acre 32-35 kg/HA

“

Our grass reseeds follow Winter Barley to give a clean entry. HF Seeds are our mixtures of choice to supply forage to 120 dairy cows & follower. We cut in the middle of May and these mixtures deliver high quality crops and superb regrowth for second cut. Good silage and grazing is essential for us and HF Yielder delivers what we need, when we need it.

JW & AE Faulkner
Smerills Farm, Radbourne,
Kirk Langley, Derbyshire.

HF Dividend

3 year mixture

PERSEUS
Advanced™ Italian Ryegrass

LOFA
Advanced™ Hybrid Ryegrass

SOLID
Tetraploid
Hybrid Ryegrass

CITELIAC
Tetraploid
Hybrid Ryegrass

SEAGOE
Tetraploid
Intermediate Perennial Ryegrass

GLENSTAL
Tetraploid
Intermediate Perennial Ryegrass

HF CUTTING CLOVER BLEND
White Clover

Mainly Cutting Mixture

Dividend is a high performance mixture suitable for Cutting or Grazing

- Contains a high proportion of Advanced™ Grasses for big yields and stress tolerance
- Will provide 3 full years of quality silage or grazing
- High tetraploid content for rapid fermentation in the pit or grazing palatability
- HF CUTTING White Clover blend included at low percentage rate but may be changed to Red Clover

Recommended sowing rate:
13-14 kg/acre 32-35 kg/HA

HF Grassmaker

4 to 6 year mixture

BOYNE
Intermediate Perennial Ryegrass

SOLOMON
Intermediate Perennial Ryegrass

DIWAN
Tetraploid
Intermediate Perennial Ryegrass

SEAGOE
Tetraploid
Intermediate Perennial Ryegrass

PASTOUR
Late Perennial Ryegrass

ROMARK
Late Perennial Ryegrass

TODDINGTON
Late Perennial Ryegrass

ASPECT
Tetraploid
Late Perennial Ryegrass

DOLINA
Timothy

PROMESSE
Timothy

HF DUAL PURPOSE CLOVER BLEND
White Clover

Dual Purpose Mixture

A flexible, rotational mixture renowned for its consistent yield and performance, under different management regimes

- One of our best selling mixture across the UK
- Contains the very best and most productive varieties
- Persistence is ensured by top class sward density and winter hardiness
- Specifically formulated for high DNDF forage, giving increased meat or milk production per kg of dry matter

Recommended sowing rate:
13-15 kg/acre 32-35 kg/HA

“

HF grass seed is sown on all the farm except for 2 fields which have been earmarked for reseeding. I use it on the grazing platform and the silage ground, swards are dense, persistent and I really like it. I milk 110 spring calving cows alongside 100 ewes so early grass is money made or at least saved! Concentrates are kept under 950kg per head along with top quality silage. I cut early and 3 times over the season, running the ewes early over the silage ground really improves the quality of silage.

James Steel
Islandmagee

HF
Reward

4 to 8 year mixture

| |
|--|
| GENESIS Early Perennial Ryegrass |
| BOYNE Intermediate Perennial Ryegrass |
| SOLOMON Intermediate Perennial Ryegrass |
| DIWAN Tetraploid Intermediate Perennial Ryegrass |
| SEAGOE Tetraploid Intermediate Perennial Ryegrass |

| |
|---|
| ROMARK Late Perennial Ryegrass |
| PASTOUR Late Perennial Ryegrass |
| ASPECT Late Perennial Ryegrass |
| HF DUAL PURPOSE CLOVER BLEND White Clover |

Dual Purpose Mixture

Similar to HF Grassmaker but containing early Perennial Ryegrass for early bite

- Specifically formulated for early spring growth
- Designed for early sheep grazing, prior to first cut silage
- Offers great flexibility to beef and sheep farms
- High inclusion of 6% White Clover, the same as HF Grassmaker

Recommended sowing rate:
13-15 kg/acre 32-35 kg/HA

HF
Supersward

4 to 8 year mixture

| |
|--|
| BOYNE Intermediate Perennial Ryegrass |
| SOLOMON Intermediate Perennial Ryegrass |
| SEAGOE Tetraploid Intermediate Perennial Ryegrass |
| TODDINGTON Late Perennial Ryegrass |
| PASTOUR Late Perennial Ryegrass |

| |
|---|
| ASPECT Tetraploid Late Perennial Ryegrass |
| ALFONSO Tetraploid Late Perennial Ryegrass |
| DOLINA Timothy |
| PROMESSE Timothy |
| HF CUTTING CLOVER BLEND White Clover |

Dual Purpose/Cutting Mixture

Supersward is a high performance mixture suitable for Cutting or Grazing

- Designed with later heading varieties for later areas
- Varieties selected for high cutting yield and quality
- Slightly higher inclusion of Timothy for colder and later areas
- Excellent winter hardiness and sward density

Recommended sowing rate:
14-15 kg/acre 32-35 kg/HA

HF
Master Silage

3 to 6 year mixture

| |
|--|
| LOFA Tetraploid Hybrid Ryegrass |
| CITELIAC Tetraploid Hybrid Ryegrass |
| SOLOMON Intermediate Perennial Ryegrass |
| SEAGOE Tetraploid Intermediate Perennial Ryegrass |
| TODDINGTON Late Perennial Ryegrass |
| ASPECT Tetraploid Late Perennial Ryegrass |
| ALFONSO Tetraploid Late Perennial Ryegrass |

Intensive Gutting Mixture

Specifically designed for 3 or 4 cuts

- Formulated for high yields at first cut and subsequent cuts
- Designed for fast regrowth and quality, leafy silage
- Contains a substantial proportion of High DNDF varieties
- High sugar grasses and no Timothy ensures top quality silage

Recommended sowing rate:
13-15 kg/acre 32-35 kg/HA

“

We run a 364 acre farm with 550 housed dairy cows and 200 beef. We operate a 3 cut silage system with aftermath grazing 800 store bought lambs. I use HF Seeds as it is top quality and very reliable, nearly all our farm is sown out with HF mixtures which provides lots of forage, we find that the mixture has a tight group on heading dates which is very important to us when trying to get the grass cut.

Paul Greening
Waverbank, Cumbria



HF Master Graze

4 to 8 year mixture

BOYNE
Intermediate Perennial Ryegrass

SOLOMON
Intermediate Perennial Ryegrass

SEAGOE
Tetraploid
Intermediate Perennial Ryegrass

ROMARK
Late Perennial Ryegrass

CANCAN
Late Perennial Ryegrass

TODDINGTON
Late Perennial Ryegrass

ASPECT
Tetraploid
Late Perennial Ryegrass

HF GRAZING CLOVER BLEND
White Clover

Intensive Grazing Mixture

The ultimate cattle grazing mixture

- High tillering varieties selected for a dense, leafy sward
- Formulated to even out grass production for the whole grazing year
- Palatable, high sugar varieties with excellent sward density and with good levels of DNDF
- A high inclusion of HF Grazing White Clover blend and no Timothy leads to improved animal performance

Recommended sowing rate:
13-15 kg/acre 32-35 kg/HA



I milk 70 cows and have switched to a Zero Grazing system. Milk from forage has increased from 2500 to 4500lts. Total production stands at 9500 lts.

I find HF Master Graze ideal for my system. Last year I was out from the 10th of March till Mid November. Shoulder growth is excellent but it's the density I like best. I aim for an 18-20 day rotation and that's the key for more milk from forage.

This year I have kept to the reseeding plan with more supergraze put down and for the first time I have overseeded with ProNitro® in 2 silage fields that were becoming very open. Soil moisture was ideal just after cutting so I went straight in, now there's many new germinating plants.

Matthew Davidson
Magheralin, Co. Armagh.

Matthew also rears in excess of 500 calves per year under contract for Linden Foods, Dungannon.

HF Evergreen

8 year+ mixture

GENESIS
Early Perennial Ryegrass

SOLOMON
Intermediate Perennial Ryegrass

BOYNE
Intermediate Perennial Ryegrass

SEAGOE
Tetraploid
Intermediate Perennial Ryegrass

DIWAN
Tetraploid
Intermediate Perennial Ryegrass

CANCAN
Late Perennial Ryegrass

ROMARK
Late Perennial Ryegrass

ASPECT
Tetraploid
Late Perennial Ryegrass

DOLINA
Timothy

PROMESSE
Timothy

HF DUAL PURPOSE CLOVER BLEND
White Clover

Permanent Mixture

The famous versatile long term mixture giving quality forage for many years

- A dual purpose mixture which has become synonymous with quality permanent grass
- Very persistent and winter hardy which contribute to its longevity
- Includes high levels of White Clover, Timothy and diploid Perennial Ryegrasses for increased density
- Will produce plenty of early grass, even in harsher parts of the UK

Recommended sowing rate:
14-16 kg/acre 35-40 kg/HA



We farm 16000 acres of Dunalastair Estate with 1800 ewes and 100 beef cows, a large portion of which is rough grazing. HF High Hill was sown in early June and I was happy with how fast it established and the huge amount of clover that came. We grazed it incredibly hard and it recovered remarkably well. Persistency and longevity are key to us so that is why we selected HF High Hill.

Finlay McIntyre
Dunalastair Estate.

HF High Hill

8 year+ mixture

BOYNE
Intermediate Perennial Ryegrass

SOLOMON
Intermediate Perennial Ryegrass

NIFTY
Late Perennial Ryegrass

GLENROYAL
Late Perennial Ryegrass

ASTONCHIEFTAIN
Late Perennial Ryegrass

TWYMAX
Tetraploid
Late Perennial Ryegrass

DOLINA
Timothy

PROMESSE
Timothy

MAXIMA
Creeping Red Fescue

HF GRAZING CLOVER BLEND
White Clover

Permanent Mixture

The long term grazing mixture

- Designed to survive in harsh upland areas and to produce high grazing yields
- Ingredients are selected for cold, snow tolerance and winter hardiness
- Contains a high inclusion of dense, leafy late Perennial Ryegrasses
- High content of both HF Grazing Clover blend and Timothy for lower input situations

Recommended sowing rate:
14-16 kg/acre 35-40 kg/HA

HF Haymaker

4 to 8 year mixture

SOLOMON
Intermediate Perennial Ryegrass

BOYNE
Intermediate Perennial Ryegrass

GLENVEAGH
Late Perennial Ryegrass

ASTONCHIEFTAIN
Late Perennial Ryegrass

LAURA
Meadow Fescue

DOLINA
Timothy

PROMESSE
Timothy

HF DUAL PURPOSE CLOVER BLEND
White Clover

Hay Making Mixture

A modern mixture for traditional Haymaking

- A mixture of species used specifically in hay making
- Big yields of easily won hay (no tetraploid Ryegrasses)
- High Timothy inclusion
- Good winter hardiness ensures consistent bulk for many years

Recommended sowing rate:
13-15 kg/acre 32-37 kg/HA

14

HF Reliant

8 year+ mixture

GENESIS
Early Perennial Ryegrass

SOLOMON
Intermediate Perennial Ryegrass

MAGICIAN
Tetraploid
Intermediate Perennial Ryegrass

GLENROYAL
Late Perennial Ryegrass

ASTONCHIEFTAIN
Late Perennial Ryegrass

GLENCAR
Tetraploid
Late Perennial Ryegrass

DOLINA
Timothy

PROMESSE
Timothy

DONATA
Cocksfoot

MAXIMA
Creeping Red Fescue

HF GRAZING CLOVER BLEND
White Clover

Permanent Mixture

A traditional mixture for more extensive or drought prone areas

- Contains Cocksfoot for early grass, winter survival and drought tolerance
- Formulated to provide season long production and outstanding persistency
- Can be closed off and cut for hay or silage
- Varieties and species selected for very good sward density

Recommended sowing rate:
14-16 kg/acre 35-40 kg/HA

HF Horse Paddock

4 to 8 year mixture

SOLOMON
Intermediate Perennial Ryegrass

PREMIUM
Intermediate Perennial Ryegrass

TODDINGTON
Late Perennial Ryegrass

MAXIMA
Creeping Red Fescue

PROMESSE
Timothy

Equine Use Mixture

A hard wearing, persistent sward designed for horses

- Ryegrasses selected for top sward density ratings
- Formulated with attractive but low sugar forage to avoid laminitis
- Creeping Red Fescue binds the sward and helps repair poaching
- High Timothy content for grazing horses and to boost haymaking if required

Recommended sowing rate:
15 kg/acre 37 kg/HA

15

HF Dryland

4 to 8 year mixture

PERSEUS
Advanced™ Italian Ryegrass

LOFA
Advanced™ Hybrid Ryegrass

MAGICIAN
Tetraploid
Intermediate Perennial Ryegrass

GLENCAR
Tetraploid
Late Perennial Ryegrass

DONATA
Cocksfoot

Drought Prone Areas Mixture

A specialist mixture for sandy/light soils

- All species are very deep rooting
- Will produce a large bulk of forage, even in drought prone soil
- Excellent disease resistance particularly crown rust which can be a big problem in hot, dry conditions
- Suitable for cutting or grazing

Recommended sowing rate:
15 kg/acre 37 kg/HA



HF CC

Over winter/early spring mixture

MERIBEL
Italian Ryegrass

EMERALD
Forage Rape

GREEN GLOBE
White Turnip

Sheep Grazing Mixture

Designed to produce autumn and spring grazing

- Green Globe is a white fleshed, green skinned turnip providing good winter forage
- Do not leave it to grow too tall or the Italian Ryegrass will suffer
- A highly productive catch crop mixture
- Can be used for ewes or fattening lambs

Recommended sowing rate:
9 kg/acre 22 kg/HA



“

With milk quotas now gone in Ireland I have increased the herd size by 20% and have plans for further expansion. My expansion plans are based on maximising yields of top quality forage. Particular attention to silage quality has really paid off with silage this year cut on 20th May showing a D-value of 78.8, a record for the farm. I put at least some of that down to HF's selection of top quality varieties. HF quality also transfers into their grazing mixtures with dense, persistent and high yielding swards.

Frankie Crinion
Beaupark, Navan,
County Meath

17

HF Multipurpose Landscaper

Long term mixture

GLENVEAGH
Late Perennial Ryegrass

MAXIMA
Creeping Red Fescue

Landscaping Mixture

Ideal for riverbanks, verges, fruit farms and orchards

- Extreme sward density and good wear tolerance
- Designed to be low maintenance
- Much lower sowing rate than an amenity type mixture
- Has an attractive appearance with a good dark green colour

Recommended sowing rate:
25 kg/acre 65 kg/HA

“

Our buyers come back year after year to source their grass fed shearlings from Hilton of Culsh because our naturally fed tups last longer. We have been using HF mixtures for over 20 years and have found that they can consistently grow tups without needing any hard feed.

W A Brown
Hilton of Culsh Farm

HF CD

Over winter/early spring mixture

MERIBEL
Italian Ryegrass

EMERALD
Forage Rape

Sheep Grazing Mixture

Similar to HF CC, but without the white turnips

- Our most popular catch crop mixture
- Great early spring growth from the Italian Ryegrass
- Graze early to avoid damaging the Italian Ryegrass
- Can be used for ewes or fattening lambs

Recommended sowing rate:
9 kg/acre 22 kg/HA



16



CITELIAC
Tetraploid
Hybrid Ryegrass

LOFA
Advanced™ Hybrid Ryegrass

GLENCAR
Tetraploid
Late Perennial Ryegrass

HF CUTTING CLOVER BLEND
White Clover

Overseeding Mixture

For cutting fields

- Ryegrass content is 100% large tetraploid seeds which establish aggressively and boost sugar content
- Designed to improve silage yields in tired or open swards, sow after the last cut of the season
- Is also available in a Red Clover option, with 30% inclusion (HF GRASSMAX RED)
- Has 10% HF White Clover Cutting blend as a standard, but also available as a no clover option

Recommended sowing rate:
10 kg/acre 25 kg/HA



SEAGOE
Tetraploid
Intermediate Perennial Ryegrass

TWYMAX
Tetraploid
Late Perennial Ryegrass

ALFONSO
Tetraploid
Late Perennial Ryegrass

HF GRAZING CLOVER BLEND
White Clover

Overseeding Mixture

For grazing fields

- Varieties specifically selected for their grazing yield
- High sugar grasses used to increase palatability and improve livestock performance
- Can be drilled at any time during the grazing season
- Has 10% HF Grazing White Clover as standard, but also available as a no clover option

Recommended sowing rate:
10 kg/acre 25 kg/HA

“

I've been using HF mixtures for many years and I'm always delighted with the quality and quantity of silage, as well as first class aftermath grazing.

Iain McKenzie
Brora

(Seed supplied by
W and A Geddes, Wick)



CITELIAC
Tetraploid
Hybrid Ryegrass

SEAGOE
Tetraploid
Intermediate Perennial Ryegrass

KINTYRE
Tetraploid
Late Perennial Ryegrass

HF DUAL PURPOSE CLOVER BLEND
White Clover

Overseeding

For cutting and grazing fields

- The top selling Overseeding mixture for cutting and grazing fields
- Ryegrass varieties are selected for performance under both cutting and grazing
- Very good resistance to all the main grass diseases
- Has 10% HF Dual Purpose White Clover as standard. Also available as a no clover option

Recommended sowing rate:
10 kg/acre 25 kg/HA



HF GrassMax™ overseeding mixtures are all available with ProNitro® seed treatment. Every seed is coated with nitrogen fertiliser in both fast and slow release forms to form a coating to give the seed an extra boost.

This unique, precision targeted fertiliser coating feeds only the sown seed and not the surrounding sward, resulting in less weeds and improved establishment vigour at the most crucial stage in the overseeding process.



- Sow from 10kg/acre
- Feeds the seed and not the surrounding grass giving up to 34% more viable plants and up to 30% increase in root growth
- Can increase forage yield and therefore lead to more meat and milk production
- Targeted nutrient application which can reduce losses to the environment by up to 50%

ALL HF GRASSMAX™ MIXTURES ARE AVAILABLE WITH PRONITRO®

All the HF High Clover Mixtures
are available as Organic Mixtures
(70% Organic Content)



“

We need lots of high quality grass
right through the year as we have
both dairy cows and sheep. Mixtures
must be flexible so that we can utilise grass
for cow grazing, sheep grazing and for silage. We
sow our mixtures after winter barley and rotationally
graze with sheep to thicken up the sward for future years.

I am very satisfied with HF grass mixtures.

Johnathan Stalker
Ratten Castle, Sowerby Row, Carlisle

HF High Clover SHORT TERM

2 to 3 year mixture

SOLID
Tetraploid
Hybrid Ryegrass

CITELIAC
Tetraploid
Hybrid Ryegrass

LOFA
Advanced™ Hybrid Ryegrass

PERSEUS
Advanced™ Italian Ryegrass

HF RED CLOVER BLEND
Red Clover

Mostly Cutting Mixture

A High Performance Red Clover Mixture

- Red Clover is included at the optimum 25% rate to produce lots of high protein silage
- Contains aggressive, fast growing species that can compete with the Red Clover
- High sugar varieties included to give good fermentation
- Can give up to 3 cuts per year and can last for 3 full years

Recommended sowing rate:
12-14 kg/acre 30-35 kg/HA

HF High Clover GRAZE

5 year+ mixture

NIFTY
Intermediate Perennial Ryegrass

TODDINGTON
Late Perennial Ryegrass

GLENROYAL
Late Perennial Ryegrass

PASTOUR
Late Perennial Ryegrass

ASTONCHIEFTAIN
Late Perennial Ryegrass

ALFONSO
Tetraploid
Late Perennial Ryegrass

TWYMAX
Tetraploid
Late Perennial Ryegrass

HF GRAZING CLOVER BLEND
White Clover

Mostly Grazing Mixture

Leafy, dense swards

- Varieties are selected for their grazing performance
- Contains mostly late Perennial Ryegrass that can withstand heavy grazing
- High DNDF varieties leading to excellent animal performance
- The small and medium leaf clovers are selected for their persistency under grazing

Recommended sowing rate:
14-15 kg/acre 35-37 kg/HA

HF High Clover DUAL PURPOSE

4 to 8 year mixture

SOLOMON
Intermediate Perennial Ryegrass

DIWAN
Tetraploid
Intermediate Perennial Ryegrass

MAGICIAN
Tetraploid
Intermediate Perennial Ryegrass

GLENROYAL
Late Perennial Ryegrass

ASTONCHIEFTAIN
Late Perennial Ryegrass

A Dual Purpose Mixture

A very flexible mixture

- Contains high DNDF varieties with excellent forage quality
- High percentage of tetraploids to help fermentation and aid the growth of clovers
- Small Red Clover inclusion to help with nitrogen fixation in the early years
- HF Dual Purpose Clover is included at 12% for increased production

Recommended sowing rate:
14-15 kg/acre 35-37 kg/HA

TWYMAX
Tetraploid
Late Perennial Ryegrass

ALFONSO
Tetraploid
Late Perennial Ryegrass

PROMESSE
Timothy

AMOS
Red Clover

**HF DUAL PURPOSE
CLOVER BLEND**
White Clover

“

I have been using HF Seeds for many years and I'm very pleased with the way they establish. This years field is sown at 1,100 feet and is an excellent sward of grass and clover.

George McConachie
Cromdale



| Variety | Specie | Description | SAC | AFBI | NIAB |
|-----------------------|------------------|---|-----|------|------|
| PERENNIAL RYE GRASSES | | | | | |
| Genesis | Early | Later heading within the group, exceptional quality & grazing yields | 1 | ✓ | ✓ |
| Solomon | Intermediate | Great all round variety, with high DNDF & D-value | 1 | ✓ | ✓ |
| Nifty | Intermediate | New variety with exceptional grazing qualities | 1 | ✓ | ✓ |
| Premium | Intermediate | Good mid season growth, very good disease resistance | 1 | | ✓ |
| Boyne | Intermediate | Very high yields, especially first cut. Very dense growth habit | 1 | ✓ | ✓ |
| Diwan | Intermediate (T) | New variety, exclusive to HF with excellent digestibility | 1 | N/A | ✓ |
| Magician | Intermediate (T) | Produces very high grazing yields throughout the growing season | 1 | ✓ | |
| Seagoe | Intermediate (T) | Outstanding variety with excellent growth and good forage quality | 1 | ✓ | ✓ |
| Glenstal | Intermediate (T) | Good all round variety offering good yields throughout the season | 1 | | ✓ |
| Pastour | Late | High DNDF variety with no obvious weaknesses | 1 | ✓ | ✓ |
| Cancan | Late | Good grazing variety with very late heading date, good quality forage | 2 | | ✓ |
| Glenroyal | Late | Good mid and late season growth, with a very dense sward rating | 1 | | |
| Toddington | Late | Good dual purpose forage variety with good disease resistance | 1 | | ✓ |
| Glenveagh | Late | Good mid to late season growth with high sward density | 1 | | |
| AstonChieftain | Late | Dense, late heading and very high yielding. New to HF | 1 | N/A | |
| Kintyre | Late (T) | Great forage quality at first and second cuts | 1 | ✓ | |
| Twymax | Late (T) | Very dense sward for a tetraploid, high DNDF variety | 1 | ✓ | ✓ |
| Aspect | Late (T) | New variety with good growth throughout the growing season | 1 | ✓ | ✓ |
| Glencar | Late (T) | Superb cutting variety, outstanding spring growth | 1 | ✓ | |
| Alfonso | Late (T) | Good ground cover for a tetraploid, good spring growth | 1 | | ✓ |

| Variety | Specie | Description | SAC | AFBI | NIAB |
|------------------|-----------------------------|---|-----|------|------|
| FESTULOLIUM | | | | | |
| Lofa | Hybrid Festulolium | Excellent stress tolerances, with fantastic early growth | | | N/A |
| Perun | Italian Festulolium | Fast growing plant that produces very high quality forage | | | |
| Perseus | Italian Festulolium | Better persistence than a traditional Italian, exceptional early spring growth | | | |
| ITALIAN RYEGRASS | | | | | |
| Meribel | Italian | One of the highest yielding Italians on the UK market and very good sward denisty | 1 | ✓ | ✓ |
| Fox | Italian | New variety with high yields and great disease resistance | 1 | ✓ | ✓ |
| Gemini | Italian (T) | Top yielding variety with the best D-values on the list | 1 | | ✓ |
| HYBRID RYEGRASS | | | | | |
| Hymer | Hybrid (T) | Fantastic yields and forage quality on its first cut | 1 | | ✓ |
| Solid | Hybrid (T) | Good sward density with good mid season growth | 2 | | ✓ |
| Citeliac | Hybrid (T) | Great yields with great early spring growth from a perennial type hybrid | 2 | | ✓ |
| TIMOTHY | | | | | |
| Promesse | Timothy | Good autumn growth, compliments grass mixtures well without over powering | 1 | ✓ | ✓ |
| Dolina | Timothy | Excellent early and autumn growth | 1 | ✓ | ✓ |
| WHITE CLOVER | | | | | |
| Violin | White Clover - Medium/Large | Highest yielding clover on the recommended list, outstanding variety | 1 | | ✓ |
| Buddy | White Clover - Medium/Large | High yielding clover on the recommended list, when grown with Ryegrass | 1 | ✓ | ✓ |
| Iona | White Clover - Medium | Excellent growth throughout the season recommended for use throughout the UK | 1 | ✓ | ✓ |
| Avoca | White Clover - Medium | Outstanding variety with excellent yield and persistency | 1 | ✓ | ✓ |
| Galway | White Clover - Small | Excellent persistence under both cutting and hard grazing | 2 | | ✓ |
| RED CLOVER | | | | | |
| Magellan | Red Clover (T) | Very high yields of protein rich forage particularly in second and third cuts | 1 | | ✓ |
| Sangria | Red Clover | Outstanding total yields for this new variety from RAGT | N/A | N/A | N/A |
| Amos | Red Clover (T) | Great persistence maintaining high yields from an early to intermediate variety | 1 | | ✓ |

Swedes

Swedes are a full season crop that will last until the end of March or early April. They may be grazed in situ or lifted for stock feed or culinary use. They perform well in Scotland and the north producing 70 to 80 tonnes of fresh weight per hectare of high ME feed (12.8 to 13.1 MJ/kg DM).

| Variety | Skin Colour | Flesh Colour | Dry Matter | Comments |
|-------------|---------------|--------------|-------------|---|
| Airlie | Light Purple | Creamy white | Low/Medium | Good disease resistance and very uniform |
| Gowrie | Purple | Yellow | Medium | Uniform, high yielding and has some club root tolerance and good mildew |
| Invitation | Purple/Bronze | Yellow | Very high | Very high yielding and winter hardy. Excellent resistance to club root and mildew |
| Kenmore | Bronze/Green | White | Medium | Good winter hardiness giving a wide window of utilisation. Big fresh yields |
| Lomond | Purple | Yellow | Medium/High | Good club root and mildew resistance |
| Marian | Purple | Yellow | Medium | A good culinary variety |
| Ruta Otofte | Dark Purple | Cream | Medium/High | Very popular variety with sheep farmers. Good winter hardiness |

Fodder Beet

High yielding and palatable. High dry matter varieties sit lower into the ground, are more frost tolerant but often have a higher dirt tare. Medium dry matter varieties sit out of the ground more, are easier to harvest and may be grazed. Good weed control is essential when establishing fodder beets.

| Variety | Colour | Comments |
|---------|--------|--|
| Alpes | Yellow | Easy lifting variety, very clean, popular |
| Bangor | Yellow | High yielding variety, clean, grows above the ground |
| Troya | Yellow | An easy lifting variety, good disease resistance |
| Jamon | Orange | Very palatable. Can be grazed in situ |
| Enermax | White | A dual purpose variety, very high yields, clean |
| Kyros | White | A good value for money variety. High DM, low growing |
| Magnum | White | A well-known reliable variety. High DM, low growing |
| Nestor | White | A good value for money variety. High DM, low growing |

Kale

The highest yielding leafy brassica. Grazed by sheep and cattle and occasionally ensiled. Good frost tolerance, but MUST be looked after with good fertility, weed and pest control.

| Variety | Height | Use | Comments |
|------------------|--------------|------------------|---|
| Goldeneye | Very tall | Game cover | Strong stem and leafy top, club root tolerant |
| Gruner Angeliter | Very tall | Cattle | Winter hardy and very high yielding |
| Maris Kestrel | Medium short | Sheep | Popular leafy sheep grazing variety |
| Sovereign | Medium tall | Cattle and sheep | High leaf to stem ratio, winter hardy and club root tolerant. Our best selling kale |

Stubble Turnips

Stubble turnips are a fast growing catch crop that are ready to start grazing from 10 to 12 weeks after sowing. Bulbing types are more winter hardy than leafy types, which have better root systems.

| Variety | Type | Comments |
|-------------|----------|---|
| Barkant | Bulb | Very popular high yielding variety with some winter hardiness. Roots are slightly smaller, but highly digestible |
| Vollenda | Bulb | Large leaves on this fast establishing tetraploid variety. Good bulb size and palatability |
| Avalon | Leafy | A new variety. Very leafy and covers the ground quickly |
| Tyfon | Leafy | It is a cross between a Chinese cabbage and a stubble turnip. Fast growing with reasonable potential for regrowth |
| Green Globe | Maincrop | Very high fresh yields from large, well anchored and palatable roots. Can be utilised to the end of January |

Forage Rape and Hybrids

This fast growing crop can be utilised by cattle and sheep and has a wide period of utilisation (mid summer and autumn). Highly digestible energy crop which is very palatable and is relatively simple to establish.

| Variety | Type | Comments |
|------------------|--------------------------|---|
| Emerald | Forage rape | Very popular, fast establishing and palatable. Good disease resistance. Proven over many years in all areas |
| Akela (organic) | Forage rape | Very late flowering with good winter hardiness. Only Organic seed available |
| Spitfire | Rape x kale cross | High DM yields of palatable leafy growth. Stems have a low DM so are often grazed. Has good regrowth potential |
| Zoom (Composite) | Hybrid brassica and rape | A mixture of Winfred hybrid brassica and forage rape which is exceptionally quick to establish and has excellent leaf to stem ratio |



Basic Payment Scheme – Greening

Greening has been introduced to improve the environmental performance of farming. It is mandatory for applicants to the Basic Payment Scheme BPS to comply with greening requirements, where relevant. There are three elements to Greening :-

Permanent Pasture

Land out of rotation for more than five years

Crop Diversification on Arable Land

Often called the “3 crop rule” (temporary grass is also arable)

Ecological Focus Areas (EFA)

6 different options to manage a weighted 5% of land as EFA

The basic principles of Greening are the same throughout the UK, but each region has its own specific requirements. Below are the English Greening options. Please check the exact regulations within your own area.

| Variety | Basic Guide | EFA Weighting | Suggested Mixtures |
|-----------------|--|---------------|---|
| Buffer Strips | Must be next to or run parallel with a water course or on a slope leading to a water course. Minimum width of 1 metre. The same buffer strips can be used to meet both greening and cross compliance rules. | 1.5 | Specials Rich Grass mixtures BGM mixtures Legume & Herb mixtures Wildflower mixtures |
| Fallow Land | Fallow Period 1st January to 30th June. Minimum width 2m wide with a minimum area of 0.01ha. Wild Bird Mixtures & Nectar Rich Mixtures encouraged. Temporary grass & buffer strips can be managed as fallow. Grass can be sown during the fallow period as long as there is no production during the fallow period. Fallow land can be mown as long as the cuttings are left on the land. Can utilise grass after fallow period. | 1 | EFA Fallow mixtures See opposite |
| Catch Crops | Catch crops established by 31st August and retained until at least 1st October. Cover crops established by 1st October and retained until 15th January. Must consist of a sown mix of at least 2 different cover types (1 cereal & 1 non-cereal) that establishes quickly, achieves good ground cover and has different root depths. Crops to choose from are rye, oats, barley, phacelia, mustard, vetch, radish and Lucerne. The list does not include crops that would usually be grazed. Minimum area 0.01ha. Grass can also be used, but it must be undersown in the previous crop and established. | 0.3 | Revival mixtures N-Rich Cover mixture N-Hance Cover mixture |
| Nitrogen Fixing | An eligible list of leguminous crops has been published e.g. beans and peas. Pasture legumes also qualify, a detailed list has been published e.g. lucerne and red clover Legumes with grass cannot be counted. Must be in the ground 1st May – 30th June. Minimum plot size 0.01ha. | 0.7 | All Clovers Peas Beans Birds Foot Trefoil Sainfoin Lucerne Vetch Black Medick Yellow Blossom Clover |
| Hedges | Hedges need to be next to arable land. Minimum length 20 metres, with no minimum height or width. Newly planted hedges eligible. | 2 | |

HF Fallow Mixture No.1

| |
|---|
| 35% Late Perennial Ryegrass (diploid) |
| 50% Late Perennial Ryegrass (tetraploid) |
| 10% Timothy |
| 5% White Clover Blend |
| 100% |

- The Timothy and the late heading Perennial Ryegrasses will have kept their feed quality much better than a conventional mixture would have done
- Will give an easily won crop after 1st July
- As no fertiliser may be applied the clover is very important

Recommended sowing rate:
12-14 kg/acre 30-35 kg/HA

HF Fallow Mixture No.2

| |
|---|
| 40% Late Perennial Ryegrass (diploid) |
| 50% Late Perennial Ryegrass (tetraploid) |
| 10% Timothy |
| 100% |

- This mixture has NO White Clover for situations where weed control may need to be carried out after 1st of July
- This should make a classic hay or haylage crop
- Low energy and low potash feed – ideal for dry cows

Recommended sowing rate:
12-14 kg/acre 30-35 kg/HA

HF Fallow Mixture No.3

| |
|---|
| 40% Late Perennial Ryegrass (diploid) |
| 55% Late Perennial Ryegrass (tetraploid) |
| 5% White Clover Blend |
| 100% |

- This mixture has NO Timothy for lighter soils or where aftermath grazing is most important. Fertiliser may be applied after the end of the fallow period (1st July)
- Plenty of fresh clean grass at a really useful time of year

Recommended sowing rate:
12-14 kg/acre 30-35 kg/HA

HF Your Countryside

For further advice in the specialist area of game cover, environmental stewardship and fodder crops or to request an HF Countryside brochure please contact your HF distributor or phone HF Seeds direct on 01506 674800





Grass and Fodder Crops

THE BEST GRASS SEED MIXTURES

HF Grass Mixtures have been developed following many years of trials and on-farm experience to ensure top quality highly productive swards capable of exceptional performance and offer the best complete package and real value for money to farmers throughout the length and breadth of the UK and Ireland.

THE BEST ADVICE

The HF package goes much further than just product quality and extends as far as the farm gate and the end user. All HF products are backed by a country-wide network of in-house seed specialists and experienced distributors who are capable of offering technical help and advice on all aspects of mixture selection and establishment. Their knowledge can help balance the issues of yield, seasonal growth, forage quality, sward density, disease resistance and winter hardiness to ensure that you select the mixture best suited to your individual farm, enterprise and location.

THE BEST PRODUCTS

- Mixtures are formulated using only the best varieties selected from a wide range of breeders for their overall performance
- Unique mixture design with all grasses and clovers selected on the basis of their performance in UK trials
- The highest standards of purity and germination ensure the fast establishment of dense, weed free swards
- On-going trials and research ensure that HF Mixtures lead the field with unique advances in grass mixture technology

THE BEST VALUE

The combination of the best advice and the best products from experienced distributors who understand the pressures of livestock farming at a local level ensures that HF Mixtures always deliver real value from top performance swards.

Nick Duggan

Technical Business Manager
England



YOUR NEAREST HF DISTRIBUTOR IS

Kevin Tregunna - Farm Equip

Mobile: 07881 804442

Home/Office: 01872 270621

Email: kevin:farmequip.co



Marketed by:



10 Westerton Road
East Mains Industrial Estate
Broxburn, West Lothian
EH52 5AU

Tel : 01506 674800

Fax : 01506 691212

Thorn Farm
Inkberrow
Worcestershire
WR7 4LJ

Tel : 01386 791101

Fax : 01386 792216

www.dlf.co.uk

CONTACT HF SEEDS ON 01506 674800 FOR ALL YOUR FORAGE SOLUTIONS