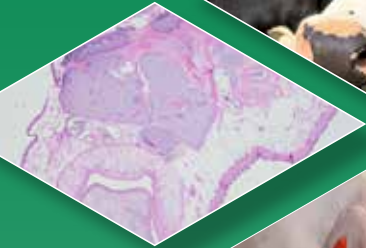


**SAC**  
CONSULTING



# Farm Animal Diagnostic Services

SAC Consulting  
Veterinary Services  
Price List

**2016/17**



**Practices in Scotland please contact your nearest Centre.  
Those practices located in the rest of the UK please contact us  
via our Edinburgh Centre below.**

**SAC Consulting: Veterinary Services**

**Edinburgh**

Bush Estate, Penicuik, Midlothian, EH26 0QE  
Tel: 0131 535 3130 Fax 0131 535 3131 Email: [vcedinburgh@sac.co.uk](mailto:vcedinburgh@sac.co.uk)

**Aberdeen**

Mill of Craibstone, Bucksburn, Aberdeen, AB21 9TB  
Tel: 01224 711177 fax 01224 711184 Email: [vcaberdeen@sac.co.uk](mailto:vcaberdeen@sac.co.uk)

**Ayr**

Auchincruive, Ayr, KA6 5AE  
Tel: 01292 520318 Fax: 01292 521069 Email: [vcayr@sac.co.uk](mailto:vcayr@sac.co.uk)

**Dumfries**

St Marys Industrial Estate, Dumfries, DG1 1DX  
Tel: 01387 267260 Fax: 01387 250028 Email: [vcumfries@sac.co.uk](mailto:vcumfries@sac.co.uk)

**Inverness**

Drummondhill, Stratherrick Rd. Inverness, IV2 4JZ  
Tel: 01463 243030 Fax: 01463 711103 Email: [vcinverness@sac.co.uk](mailto:vcinverness@sac.co.uk)

**Perth**

5 Bertha Park View, Perth PH1 3FZ  
Tel: 01738 629167 Fax 01738 643198 Email: [vcperth@sac.co.uk](mailto:vcperth@sac.co.uk)

**St Boswells**

Greycrook, St Boswells, Roxburghshire, TD6 0EQ  
Tel: 01835 822456 Fax: 01835 823643 Email: [vcstboswells@sac.co.uk](mailto:vcstboswells@sac.co.uk)

**Thurso**

Janetstown, Thurso, KW14 7XF  
Tel: 01847 892602 Fax: 01847 896355 Email: [vcthurso@sac.co.uk](mailto:vcthurso@sac.co.uk)

Visit our website at [www.sac.co.uk](http://www.sac.co.uk)  
[http://www.sruc.ac.uk/info/120107/veterinary\\_services](http://www.sruc.ac.uk/info/120107/veterinary_services)

## Welcome

We are committed to providing veterinary practices with first class diagnostic testing, advice and support for the control and prevention of disease in farm animals.

We carry out disease surveillance to detect new diseases and changes in the pattern of existing ones on behalf of the Scottish Government. Please help us by fully completing your Farm Animal submission forms.

In addition to GB diagnostic surveillance, we also provide companion animal diagnostics, analytical services (including mineral and vitamin testing on veterinary samples), farm health planning and national livestock health schemes.

## Results

Your veterinary practice, your clients and their livestock matter to us and we endeavour to report test results as rapidly as possible. Approximate turnaround times are given for guidance. Results are normally sent by email and/or fax.

## Quality

We care about providing you with a quality service. We are a United Kingdom Accreditation Services (UKAS) accredited laboratory and tests are accredited to the internationally recognised ISO/IEC 17025 standard for laboratory competence. Our farm animal diagnostic testing is carried out under the UKAS accreditation certificates (accreditation nos. 2239 and 7624). The current schedule of accreditation is available in the UKAS website.

Where tests are subcontracted to outside laboratories preference is given to those holding UKAS accreditation. Where this is not possible, laboratories are selected for specialty and expertise. Many tests are undertaken at only one laboratory and other tests may be transferred within the group. For further information contact your local DSC.



## Disease Surveillance and Research

We may wish to use samples anonymously for further disease surveillance or research work. If you do not wish to concur, please annotate the submission form appropriately.

## Contact us

Please contact your local Disease Surveillance Centre or the Central Diagnostic Laboratory **0131 535 3130** if the test you require is not listed here.

SRUC. A charitable company limited by guarantee, Scottish Charity Number: SC003712.

Registered in Scotland, Company Number: SC103046.

SAC Commercial Limited. A subsidiary company of SRUC. Registered in Scotland, Company Number SC148684.



## **SAC CONSULTING: VETERINARY SERVICES STANDARDS OF SERVICE**

SAC Consulting: Veterinary Services (SACCVS) offers laboratory services in the veterinary, food and agri-environmental sectors and strives to carry out the analysis to meet customer's requirements. The overall analytical and diagnostic laboratory operations within SACCVS comply with the requirements of ISO 17025:2005 and are assessed annually by UKAS (United Kingdom Accreditation Service)

The laboratory management system covers work carried out in the Allan Watt Building, Bush Estate, SAC Consulting Edinburgh and at Thurso, Inverness, Aberdeen, Perth, St.Boswells, Ayr and Dumfries. The SACCVS laboratories include Capital Diagnostics (CD), the Central Analytical Laboratory (CAL), comprising the Central Diagnostic Laboratory and Analytical Services Department, and eight Disease Surveillance Centres (DSC). All eight SACCVS sites hold accreditation to ISO 17025:2005. The full schedules of accredited SACCVS procedures are available on request or can be viewed on the web at [www.ukas.org/testing](http://www.ukas.org/testing) – laboratory search on laboratory ref. 2239 and 7624. Many tests are undertaken at only one laboratory and other tests may be transferred within the group. For further information contact your local DSC.

Customers must ensure that samples delivered to Disease Surveillance Centres by couriers are received within working hours to guarantee the integrity and safe handling of their submissions.

Work submitted to SACCVS that is supported by funding from the Scottish Government is considered to be 'non commercial' and is reported by SRUC. Other work submitted is considered 'commercial' and is reported by SAC Commercial Ltd. SRUC and SAC Commercial Ltd are separate legal entities and are covered by separate accreditation to ISO 17025:2005 by UKAS on certificate numbers 2239 and 7624 respectively.

Opinions and interpretations of test results are an integral part of the service provided to SACCVS customers and the scope of accreditation includes opinions and interpretations in farm and companion animal species. It is the policy of the laboratories to provide professional opinions/interpretations from within SACCVS. Where this is not possible, advice obtained from an SACCVS approved subcontractor will be used in formulating the opinions and interpretations given to customers. In such instances, this will be clearly identified on the test reports.

Opinions and interpretations provided will be based primarily on the test results and appear under the interpretation section of test reports. Accreditation for the expression of opinions and interpretations relates to test results generated from the accredited methods on the UKAS schedule. Test results generated from non-accredited test methods may be used to provide information to assist in the interpretation or diagnosis, these will appear under the comment - not accredited section.

It should be noted that it is the policy of the laboratory to always carry out the tests for which it holds accreditation. In exceptional circumstances or in the event that customers request additional tests not carried out by the laboratory, these may be subcontracted. In such circumstances, SACCVS is responsible to customers for any subcontracted tests, with the exception of subcontractors specified by customers or regulatory bodies. The laboratory has an assessment procedure for subcontractors and a register of approved subcontractors is maintained and reviewed on an annual basis. Should subcontracting be required, the services of an accredited laboratory will be employed wherever possible. The laboratory report will indicate where a subcontracted laboratory was used.

SRUC and SAC Consulting are committed to providing the highest level of service to customers and recommendations for improvement are actively encouraged. In order to add value to the service provided please advise us of any comments you may have on the quality of service and service delivery.

Brian Hosie  
Head of SAC Consulting: Veterinary Services

## Contents

	Page
Microbiology	1
Parasitology	2
Biochemistry	3
Mycotoxin testing	4
Haematology	4
Biochemistry profiles	4
Serology	5 & 6
Testing for BVD	6
Molecular biology	7
Enteritis	8
Mastitis	8
Scrapie	8
Respiratory disease	9
Pregnancy confirmation	10
Reproductive failure	10
Fertility examinations	10
Post mortem examinations	11
Cattle abortion package	11
Histopathology and cytology	12
Suggested biochemistry profiles	13
Urinalysis	14
Skins	14

In the tables the following applies:

A = Accredited to ISO 17025

N = Not Accredited

A + N = Accredited and non-accredited tests in package

A\* or N\* = Subcontracted

Microbiology					
Profile/test	Sample	Day(s) tested	Results due (working days)	Price/test + VAT	Accredited
Bacterial culture (and antibiotic sensitivity if appropriate)	Tissue/swab	Daily	< 5 days	£26.50	A
Clostridial toxin ELISA - per toxin	Intestinal content	Thursday	Day after test	£23.00	N
Johne's (MAP) culture + PCR	Faeces/tissue	Daily	Up to 2 months	£42.00	A
Sheep: Johne's (MAP) culture +PCR (pool of 10 faeces samples)	Faeces	Daily	<50 days	£72.50	A
Preparation and examination of smears	Faeces/ urine (min 2ml), tissue	Daily	< 2 days	£13.00	A
Salmonella screen	Faeces/swab	Daily	< 3 days	1-9 £16.00 10+ £14.30	A
Salmonella screening of poultry flocks to statutory requirements	Faeces	Daily	< 3 days	Quotation	A
Virus detection: Coronavirus (ELISA) and rotavirus (PAGE/ELISA)	Faeces	Tuesday & Friday	Day after test	£12.00 ELISA £16.00 PAGE	A
<b>Serotyping bacterial isolates</b>					
Bacterial serotyping	Isolates	Daily	<10 days	£43.00	N
Pig E. coli – full serotyping including ST and LT toxins	E. coli isolate	Daily	< 3 days	£43.00	N
<b>Fluorescent antibody tests</b>					
Clostridia, per antigen (C. novyi, C. septicum, C. sordellii, C. chauvoei)	Tissue	Daily	< 2 days	£19.40	A



Parasitology					
Profile/test	Sample	Day(s) tested	Results due (working days)	Price/test + VAT	Accredited
Camelid worm egg count	Faeces min 10g	Daily	< 2 days	£24.50	N*
Comprehensive parasitology	Faeces min 14g	Daily	1-3 days	1-3 £34.00 4+ £25.00	N
Egg hatch assay	Contact us			Contact us	N
Giardia	Faeces min 1g		4 days	£15.50	A*
Grouse caecal worm count	Grouse caecae	As required	1 week	£19.30	N
Haemonchus contortus egg ID (PNA test)	Faeces min 6g	Weekly	1 week	£33.50	N
ID of ovine coccidia (+ coccidia oocyst count)	Faeces min 6g (3g for count, 3g for species ID)	Three times a week as necessary	1 week	£34.00 (+£10.50)	N
ID of bovine coccidia (+ coccidia oocyst count)	Faeces min 6g (3g for count, 3g for species ID)	Daily	2 days	£15.50 (+ £10.50)	N
Liver fluke coproantigen ELISA <sup>1</sup>	Ovine faeces min 0.5g Bovine faeces min 2g (fresh as possible)	Twice a week	4 days	1-9 £10.20 10+ £8.00	N
Liver fluke coproantigen ELISA <sup>1</sup> (pooled)	Faecal samples max no. 10 advised (fresh as possible)	Twice a week	4 days	£16.00	N
Liver fluke egg check (bulk on 10 samples)	Faeces min 3g from each animal	Daily	2 days	Bulk (basic) £23.00 Bulk (full kit) £30.00	N
Liver fluke egg check on individual animals	Faeces min 4g	Daily	< 2 days	1-3 £11.50 4+ £8.80	N
Lungworm larvae examination	Faeces min 10g	Daily	1-3 days	1-3 £17.00 4+ £13.00	N
Worm and fluke eggs	Faeces min 4g	Daily	< 2 days	1-3 £20.40 4+ £14.40	N
Worm egg/coccidial oocyst count	Faeces min 3g	Daily	< 2 days	1-3 £10.50 4+ £8.00	N
Wormscan Bulk worm egg count (10 samples)  Added liver fluke	Faeces min 3g from each animal	Daily	2 days	Bulk basic £23.00 Bulk (full kit) £30.00 Plus fluke extra £11.00	N
Year parasite check (10 bulk worm or fluke checks - 12 month period)	Faeces x10	Daily	2 days	10x bulk (basic) £157.00	N

Please note: Wormscan and Liver Fluke Egg Check - Basic = testing only, Full = sample pots, envelope to send samples to lab and pre-paid postage.

Do NOT pool samples prior to submission.

<sup>1</sup>Send sample for Coproantigen testing direct to Dumfries DSC (samples to be tested within 2 days of collection)

If the test is not listed please contact us as we can provide most tests.

Biochemistry						
Profile/test	Sample	Day(s) tested	Results due (working days)	Price/test + VAT		Accredited
Routine biochemistry ** (You can select your own test packages based on price bands below, A,B,C,D,E)						
Total protein, albumin, globulin, sodium, potassium, chloride, calcium, magnesium, phosphate, urea, creatinine, glucose, beta-hydroxybutyrate, cholesterol, bilirubin, CK, AST, ALT, GDH, GGT, ALP amylase, lipase	Serum/plasma except (Glucose – fluoride plasma)	Mon - Friday	1-2 days	A	£7.80 2-3 £4.30 4+ £3.70	A
LDH, ZST Zinc* *Tubes must not contain rubber or gel components	Serum	No set day	< 5 days	A	£7.80 2-3 £4.30 4+ £3.70	N
Copper	Serum	Mon - Friday	2 days	B	£7.80 2-3 £5.20 4+ £4.80	A
GSH-Px	Whole heparinised	Mon - Friday	5 days	B	£7.80 2-3 £5.20 4+ £4.80	A
Haptoglobin, fibrinogen	Serum		< 5 days	C	£10.00	N*
Manganese	Whole heparinised	2-3 times a week	2-4 days	D	£8.50	A
Pepsinogen	Serum/plasma min 0.5ml	Tues & Thursday	4-5 days	C	£10.00	N
Vitamins A and E	Serum/plasma min 0.5ml	Tues & Thursday	1-3 days	E	1-3 £7.90 4+ £6.50	N
Vitamins B12, bile acid, lead, NEFA	Serum/plasma except lead - whole blood min 0.5ml	Daily	1-3 days	E	1-3 £7.90 4+ £6.50	A
Special biochemistry:						
Inorganic iodine	Plasma or serum (plasma preferred)				1 £43.50 Pool of 3 £49.00	N*
Progesterone	Serum/plasma	Daily	1-2 days		£23.00	N
Oestrone sulphate	Serum				£30.00	N*
Thyroxine T4	Serum/plasma	Daily	Same day		£10.00	N
Tissue analysis for copper or lead or selenium	Tissue Cu min 5g Pb min 5g Se min 5g	2-3 times a week	2-4 working days		£30.00	A
Tissue analysis for cobalt	Tissue min 5g	2-3 times a week	2-4 working days		£30.00	N
Tissue analysis Ca/Mg ratio in bone	Bone 5g (remove fat and meat)	2-3 times a week	2-4 working days		£31.00	A
Tissue analysis for vitamins A+E	Tissue min 1g	Tues & Thursday	4-5 days		Animal £50.00	N
Tissue analysis for copper, cobalt and selenium	Tissue min 5g	2-3 times a week	2-4 working days		Animal £43.00	A+N
Tissue analysis for iodine	Tissue min 1g				£62.00	N*
Qualitative test for lead (paint)	Paint flakes min 0.5g	2-3 times a week	2-4 days		£22.50	N
Other toxicology - by arrangement consult lab before submission					Quote	

\*\* See page 13 for recommended profile. Tests can be substituted if required.



### Mycotoxin testing – pigs (up to 4 samples can be pooled per test)

Profile/test	Sample	Day(s) tested	Interim results due (working days)	Price/test + VAT	Accredited
ZON or DON – bile IAC/ELISA	5 ml bile per pig		15 days	£26.00	N
ZON or DON – bile IAC/ELISA (Herd screen – 12 tests)	5 ml bile per pig		5 days	£312.00	N
ZON (serum) or DON (serum or urine)	5 ml sample per pig		15 days	£15.60	N
ZON (serum) or DON (serum or urine) (Herd screen – 12 tests)	5 ml sample per pig		5 days	£187.20	N

### Haematology

Profile/test	Sample	Day(s) tested	Results due (working days)	Price/test + VAT	Accredited
RBC, PCV, Hb,WBC (all four tests)	EDTA blood	Mon-Friday	Day of receipt	£13.00	A
WBC and differential	EDTA blood	Mon-Friday	Day of receipt	£15.50	A
Full haematology (RBC, PCV, Hb,WBC and differential)	EDTA blood	Mon-Friday	Day of receipt	£18.00	A
Examination for blood parasites	EDTA blood, blood smear	Mon-Friday	Day of receipt	£13.00	N

### Biochemistry profiles - see page 13 for recommended profiles

Full haematology additional to profile	EDTA blood	Mon-Friday	Day of receipt	£11.50	A
Herd metabolic profile* - 10 parameters	Serum/plasma + heparin + fluoride-plasma	Mon-Friday	1-2 days	18 animals £336.00	A
Production audit* - 5 parameters	Serum/plasma + heparin	Mon-Friday	1-2 days	12 animals £175.00	A
Fertility audit* - 6 parameters	Serum/plasma + heparin	Mon-Friday	1-2 days	12 animals £200.00	A
General audit* - 10 parameters	Serum/plasma + heparin	Mon-Friday	1-2 days	12 animals £290.00	A
Ewe nutrition (BOHB + Urea)	Serum/plasma	Mon-Friday	1 day	10 animals £36.00	A

## Serology

Unless indicated otherwise listed tests detect antibody to pathogens involved.  
Only at peak times are tests run as frequently as indicated.

Profile/test	Sample	Day(s) tested	Results due (working days)	Price/test + VAT	Accredited
<b>Cattle</b>					
Bovine coronavirus	Serum/plasma		7 days	1-9 £12.25 10+ £11.75	N*
Cattle lungworm	Serum	Tue & Thursday	< 8 days	1-9 £19.20 10+ £14.40	N*
Fasciola hepatica	Serum	Wednesday	Day after test	£7.00	N
IBR (BHV-1 gB), blood	Serum	Mon & Thursday	Day after test	£5.00	A
IBR (BHV-1 gE), blood	Serum	Thursday	Day after test	1-9 £7.45 10+ £7.00	A
Johne's (MAP)	Serum	Everyday	Day after test	1-39 £4.80 40+ £4.20	A
Leptospira hardjo, blood	Serum	Tue & Thursday	Day after test	£5.50	A
Mycoplasma bovis	Serum		< 9 days	£7.00	N*
Neospora caninum	Serum	Tue & Thursday	Day after test	1-39 £6.00 40+ £5.40	A
Parainfluenza 3 (PI3)	Serum/plasma	Monday	Day after test	£6.20	
Q fever	Serum		7 days	1-9 £9.40 10+ £7.40	N*
Respiratory syncytial virus (RSV)	Serum	Monday	Day after test	£6.20	
Schmallenberg virus (SBV), blood	Serum	Wednesday	Day after test	1-9 £7.00 10+ £6.00	A
<b>Dairy cow – milk serology</b>					
Fasciola hepatica	Milk with preservative	Wednesday	Same day	£7.70	N
IBR (BHV-1 gB)	Milk with preservative	Monday	Day after test	£5.50	A
Johne's (MAP)	Milk with preservative	Friday	Day after test	£5.00	N
Leptospira hardjo	Milk with preservative	Monday	Day after test	£5.50	A
Schmallenberg virus (SBV)	Milk with preservative	Wednesday	Day after test	£8.00	A
See also BVD milk tests page 6 and Mastitis milk tests page 8					
<b>Sheep and goats</b>					
Border disease	Serum	Tuesday	Day after test	1-9 £7.50 10+ £6.50 40+ £5.00	N
CAE	Serum	Wednesday	Day after test	1-9 £8.50 10+ £5.35	A
CLA	Serum	Thursday	Day after test	1-9 £8.50 10+ £7.15 40+ £5.35	N
EAE	Serum	Tue & Thursday	Day after test	1-9 £8.30 10+ £7.10	A
Fasciola hepatica	Serum	Wednesday	Day after test	£7.00	N
Louping ill	Serum	Thursday	Day after test	1-9 £12.75 10+ £11.00	N*
Maedi visna (MV)	Serum	Wednesday	Day after test	1-9 £8.35 10+ £5.25	A
MV diagnostic package (12 sheep)	serum	Tue and Friday	13 day turnaround time	£38.00	A
Orf	Serum/plasma			1-9 £14.50 10+ £11.75	N*
Q fever	Serum		7 days	1-9 £9.40 10+ £7.40	N*
Schmallenberg virus (SBV)	Serum	Wednesday	Day after test	1-9 £7.00 10+ £6.00	A
Toxoplasma	Serum	Tue & Thursday	Day after test	1-9 £8.60 10+ £7.35	A

## Serology

Unless indicated otherwise listed tests detect antibody to pathogens involved.  
Only at peak times are tests run as frequently as indicated.

Profile/test	Sample	Day(s) tested	Results due (working days)	Price/test + VAT	Accredited
<b>Pigs</b>					
Porcine salmonella	Serum	Wednesday	Day after test	£5.00	N
Porcine parvovirus	Serum	Tuesday	Day after test	£9.85	N*
Porcine respiratory coronavirus / TGE (non-diff)	Serum		7 days	£9.50	N*
PRRS ELISA	Serum	Wednesday	Day after test	£5.50	N
PRRS Tissue Culture (IPMA)	Serum		10 days	£25.00	N*
Swine flu (4 strains) HAIT	Serum		3 days	£27.00	N*
Swine flu A ELISA	Serum	Wednesday	Day after test	£5.70	N

If the test is not listed please contact us as we cater for most species.

## Testing for BVD

Profile/test	Sample	Day(s) tested	Results due (working days)	Price/test + VAT	Accredited
BVD antibody - blood	Serum		Day after test**	£3.90	A
BVD antibody - milk	Milk with preservative		Day after test	£5.10	A
BVD antigen - blood (age > 4 weeks)	Serum		Day after test**	£5.50	A
<sup>1</sup> BVD PCR - individual animal validated aged > 6 weeks	Un-opened red top tube		5 days**	£4.00	A
<sup>1</sup> BVD virus PCR - bulk milk	Milk with preservative	Tuesday & Friday	Day after test	£26.50	A
BVD virus detection in ear tissue (antigen ELISA)	Ear tissue from Tag			£5.50	
BVD PCR ear tissue (suitable for use with Caisley UK, Cox Agri, Quick Tag & Identics tags)	Ear tissue any age		5 days**	£3.45*	A
BVD PCR in support of a PM	Tissue		5 days	£26.50	A

\* Further test price discounts apply to combined Tag and Test packages via selected Tag companies.

<sup>1</sup>Requires dedicated sample for BVD PCR

\*\* From receipt at Midlothian Laboratory

Molecular biology					
Profile/test	Sample	Day(s) tested	Results due (working days)	Price/test + VAT	Accredited
<b>Cattle</b>					
Bovine pneumonia PCR for IBR, RSV, PI3	Swabs/tissue ideally in VTM	Monday & Thursday	Day after test	£30.00	A
Johne's (MAP) PCR	Faeces	Monday	Day after test	£28.00	A
Johne's (MAP) culture + PCR	Faeces/Tissue	Daily	Up to 2 months	£41.00	A
MCF virus detection PCR	Heparin/EDTA blood or tissue		7 days	£22.00	N*
Schmallenberg virus PCR	Tissue - brain & spinal cord		7 days	£21.00	N*
<b>Sheep</b>					
Border disease virus PCR	Serum	Friday	2-3 days after test	£8.20 50+ £6.00	A
Johne's (MAP) culture + PCR	Faeces/Tissue	Daily	Up to 2 months	£41.00	A
Sheep: Johne's (MAP) culture +PCR (pool of 10 faeces samples)	Faeces	Daily	< 50 days	£72.50	A
Orf examination	Scab			£22.00	N*
Schmallenberg virus PCR	Tissue - brain & spinal cord		7 days	£21.00	N*
<b>Pigs Please see footnote for pooling information</b>					
APP PCR	Throat swabs, culture		< 5 days	£37.00	A
APP toxin gene profiling PCR	Throat swabs, culture		7 days	£80.00 2-3 £56.00 4-5 £39.00 6+ £31.00	N
Atrophic rhinitis PCR (Toxigenic Pasteurella multocida)	Throat swabs		< 5 days	£36.50	A
Brachyspira PCR (B.hyodysenteriae & B.pilosicoli)	Faeces, cultures, PM material	Monday & Wednesday	Day after test	£35.00 2-3 £30.00 4+ £25.00	A
Lawsonia intracellularis PCR	Faeces, intestine	Wednesday	2 Days after test	1-3 £37.00 4+ £31.00	A
L.intracellularis & B.hyodysenteriae PCR	Faeces		7 days	£64.00 2-3 £52.00 4+ £47.00	A
Mycoplasma hyopneumoniae PCR	Throat swabs		< 5 days	£35.00	A
Mycoplasma hyopneumoniae PCR	Lung tissue		< 3 days	1-3 £56.00 4-5 £40.00 6+ £35.00	A
Porcine circovirus Type 2	Faeces, oral fluids		< 5 days	£30.00	N*
PED/TGE virus PCR	Faeces, intestine	Tuesday	Day after test	£30.00	A
Porcine Deltacoronavirus	Faeces, intestine	Tuesday	Day after test	£30.00	A
PED/TGE + Porcine Deltacoronavirus	Faeces, intestine	Tuesday	Day after test	£41.00	A
PRRS PCR	Semen, serum, lung tissues, throat swabs, blood swabs, oral fluids	Tuesday & Thursday (oral fluids to arrive day before test)	Same day	£26.50	A
Strep. suis PCR	Swabs (tonsil, meninges, joint)		Within 2 days of receipt	1-3 £37.00 4+ £26.50	N
<b>All species</b>					
Mycoplasma DGGE/PCR	Tissue/BAL/swab in Mycoplasma transport medium		15+ days	£69.00	N*

Pooling samples for PCR testing: Swabs, semen and faeces up to 5 samples=1 pool/test. Tissues: up to 3 samples = 1 pool/test

Enteritis					
Profile/test	Sample	Day(s) tested	Results due (working days)	Price/test + VAT	Accredited
<b>Ruminant enteritis</b>					
Adult ruminant enteritis – salmonella, Johne's serology, worm and fluke eggs	Faeces min 5g (blood red top)	Daily	< 5 days	£34.00 Per animal	A + N
Adult ruminant enteritis – salmonella, microscopic exam. Johne's, worm and fluke eggs	Faeces	Daily	< 5 days	£34.00 Per animal	A + N
Johne's (MAP) PCR in addition to above package	Faeces	Monday	Day after test	£26.00 Per animal	A
Calf package basic enteritis – salmonella, cryptosporidia, coccidia (use to inform therapy)	Faeces min 3g	Daily	< 3 days	£25.00 Per animal	A + N
Calf package neonatal enteritis – bacteriology and sensitivity, virology, cryptosporidia and coccidia (use in support of control programme or where there is a question of product failure)	Faeces min 4g	Daily	< 5 days	£36.00 Per animal	A + N
Young ruminant enteritis - Salmonella, worm eggs, coccidia	Faeces min 3g	Daily	< 3 days	£23.00 Per animal	A + N
Yearling ruminant enteritis – Salmonella, worm eggs, coccidia, fluke eggs	Faeces min 4g	Daily	< 3 days	£30.00 Per animal	A + N
<b>Pig enteritis packages</b>					
Brachyspira culture	Faeces or intestine (minimise amount of air in sample container)	Daily	14-21 days	£19.50 Per animal	A
Brachyspira culture and biochemical identification	Faeces or intestine	Daily	14-21 days	£30/animal	A
Package 1 (1-5 days) K88, cryptosporidia, rotavirus, Salmonella	Faeces	Daily	< 3 days	£33.00 Per animal	A
Package 2 (6 days-weaning) cryptosporidia, rotavirus, coccidia, Salmonella	Faeces	Daily	< 3 days	£33.00 Per animal	A + N
Package 3 (post weaning) K88, rotavirus, Salmonella, Yersinia	Faeces	Daily	< 3 days	£33.00 Per animal	A
Package 4 (grower/finisher) Brachyspira, Salmonella, Yersinia	Faeces	Daily	14-21 days	£33.00 Per animal	A

Mastitis					
Mastitis package - all species (bacteriology, sensitivity)	Milk	Daily	< 5 days	1-3 £24.50 4+ £18.00	A
Mastitis herd screen - bacteriology only	Milk	Daily	< 5 days	1-3 £13.50 4+ £8.40	A
Mastitis herd screen – antibiotic sensitivity	Milk	Daily	Day after	£6.40	A
Detection of inhibitory substances (Delvotest)	Milk	Daily	< 5 days	£26.30	N

Scrapie gene testing - for testing requirements refer to submission form or website <a href="http://www.sruc.ac.uk/sghs">www.sruc.ac.uk/sghs</a>					
Codons 136 & 171 test	EDTA blood		Within 3 weeks of receipt	1-12 £22.50 13+ £18.00	A
Codons 136, 154, 171 (export testing)	EDTA blood		Within 3 weeks of receipt	1-12 £32.00 13+ £27.00	A

Respiratory disease					
Profile/Test	Sample	Day(s) tested	Results due (working days)	Price/test + VAT	Accredited
Bovine respiratory disease PCR:IBR, RSV, PI3	Fresh lung or BAL	Mon & Thursday	Next day	Per animal £30.00	A
Bovine respiratory disease as above plus bacteriology, sensitivity	Fresh lung or BAL		< 5 days	Per animal £50.00	A
Virus detection on PCR negatives	Fresh lung or BAL		Less than 21 days	Per animal £27.00	N
Vials of virus transport medium are available from our laboratories					
Bovine respiratory serology					
IBR, RSV, PI3	Serum		5 days	£17.40 Paired samples £34.00	A
IBR, RSV, PI3, BVD	Serum		5 days	£21.30 Paired samples £41.60	A
IBR, RSV, PI3, M.bovis	Serum		7 days	£24.40 Paired samples £47.80	A+N
IBR, RSV, PI3, H.somni	Serum		15 days	£45.40 Paired samples £89.80	A+N
IBR, RSV, PI3, BVD, M.bovis	Serum		7 days	£28.30 Paired samples £55.30	A+N
IBR, RSV, PI3, BVD, M.bovis, H.somni	Serum		15 days	£56.20 Paired samples £111.20	A+N
Porcine respiratory serology					
M.hypopneumoniae, PRRS, Swine 'Flu (Influenza A ELISA)	Serum		15 days	Per animal £18.00	N
Porcine respiratory serology, PRRS, Swine 'Flu (Influenza A ELISA)	Serum		15 days	Per animal £11.20	N



Pregnancy Confirmation					
Profile/test	Sample	Day(s) tested	Results due (working days)	Price/test + VAT	Accredited
Bovine pregnancy glycoprotein (bPAG)	Serum			1-4 £7.00	N
Minimum of 33 days post service and 100 days post-calving				5-10 £6.40	
				11+ £5.40	
Ovine pregnancy glycoprotein (oPAG)	Serum			£15.80	N

Reproductive failure					
Profile/test	Sample	Day(s) tested	Results due (working days)	Price + VAT	Accredited
<b>Bovine abortion serology packages</b>					
L.hardjo, BVD, N.caninum	Serum		5 days	Per animal £15.30	A
L.hardjo, BVD, N.caninum, IBR	Serum		5 days	Per animal £20.40	A
<b>Ovine/Caprine abortion serology</b>					
EAE, toxoplasmosis	Serum		7 days	1-3 £16.50/animal 4+ £14.40/animal	A
<b>Porcine reproductive failure</b>					
L bratislava, PRRS and swine 'flu (Influenza A ELISA)	Serum		10 days	Per animal £20.80	N
L bratislava, PRRS and swine 'flu (Influenza A ELISA), erysipelas, parvovirus	Serum		10 days	Per animal £42.90	N

Fertility examinations					
Profile/Test	Sample	Day(s) tested	Results due (working days)	Price/test + VAT	Accredited
Bacteriology of semen and sensitivity	Semen		< 5 days	£23.00/sample	A
Examination of stained semen slides	Semen		2 days	£20.50/sample	A
Spermatozoa density	Semen		2 days	£9.50/sample	N
Campylobacter – culture and ID	Preputal washings or vaginal mucous		10 days	£40.00/sample	N

Post mortem examinations						
Description	Turnaround time working days - interim report	Price per animal + VAT	Price per batch + VAT			Accredited
<b>Cattle</b>						
Over 18 months	1	£95.00				A
6 - 18 months	1	£76.00				A
Up to 6 months	1	£50.00	£85.00			A
Foetuses	2	£59.00	£96.00			A
<b>Camelids</b>						
Over 6 months	1	£76.00	£115.00			A
Under 6 months	1	£50.00	£85.00			A
Foetuses (1 dam)	2	£59.00				A
<b>Sheep</b>						
All ages	1	£50.00	£85.00			A
Foetuses	2	£39.00	£58.00			A
<b>Pigs</b>						
Over 6 months	1	£72.00	£98.00			A
Under 6 months	1	£50.00	£85.00			A
Foetuses (1 dam)	2	£50.00				A
<b>Deer and goats</b>						
All ages	1	£50.00	£85.00			A
Foetuses (1 dam)	2	£39.00				A
<b>Game birds</b>						
Carcase	1	£39.00	£78.00			A
<b>Poultry</b>						
Carcase	1	£36.50	£72.00			A
<b>Other small farmed animals</b>						
Carcase	1	£39.00	£78.00			A
Viscera from farmed species (gross examination and appropriate bacteriology)	2	£44.00	£68.00			A
<b>Cattle abortion package</b>						
Comprehensive examination of foetus (carcase disposal included) plus maternal serology (4 tests) (Note BS7 samples must be submitted separately from suckler cows). SBV added if indicated.			£82.00			A

Note: Post mortem charges cover all necessary tests which at the discretion of the SACCVS veterinarian are required to reach a diagnosis. Additional tests requested by the owner or his veterinary surgeon which fall outwith this definition will be charged for additionally. There is a charge for carcase disposal. Batch = 2-4 animals/birds or fetuses from 2-4 dams. Where batches are submitted, some tests may be carried out on pooled samples.

Standard examination of bovine foetus includes bacteriology, foetal serology for BVDV and L Hardjo; BVDV antigen, and histopath at the discretion of the VIO. Should you request other tests such as PCR for BoHV1 or BVDV, foetal serology for Neospora and tissue iodine these will be charged at the list price. The cattle abortion package is the standard examination plus maternal serology for BoHV1, BVDV, L Hardjo and Neospora.

Histopathology and cytology					
Profile/test	Sample	Day(s) tested	Interim results due (working days)	Price/test + VAT	Accredited
Aspiration biopsy cytology	Body fluid/tissue	Daily	2 days	£24.00	N
Fluid analysis (cell count, cytology, protein)	Body fluid	Daily	2 days	£32.00	N
Fluid analysis (cell count, cytology, biochemistry, bacteriology and sensitivity)	Body fluid	Daily	2 days	£44.00	N
Histopathological examination (including report and prognosis, where appropriate)	1cm <sup>3</sup> tissue blocks*	Daily	12 days	First block (1-3 tissues) £35.00, Additional blocks £13.00 Max case charge £80.00	N

\* Tissues should be fixed in 5-10 times their own volume of formalin for 48 hours. They can then be sent in a smaller volume of formalin. Please note: Royal Mail max 50ml.

Suggested biochemistry profiles - trace element/ill thrift/minerals/production																						
	1	4+	Cu	Vit B12	GSH-Px	Vit E	CPK	Pepsinogen	Ca	Mg	P	AST	Albumin	Globulin	Urea	BOHB	NEFA	Glucose	Creatinine	Bile acid	GGT	GLDH
Bovine trace element	£10.40	£9.60	•		•																	
Bovine ill thrift profile	£34.80	£34.00	•		•			•					•	•							•	•
Bovine mini metabolic profile	£22.70	£21.30								•			•		•	•	•					
Ruminant myopathy profile	£17.50	£15.00			•	•	•															
Ruminant mineral status	£12.90	£11.10							•	•	•											
Downer cow profile	£22.20	£22.20					•		•	•	•	•			•							
Fatty liver profile	£20.80	£17.60										•				•	•	•				
Ruminant energy/protein status*	£22.70	£21.30											•	•	•	•	•					
Ewe metabolic disease profile	£12.90	£11.10							•	•						•						
Ovine trace element	£18.30	£16.00	•	•	•																	
Ovine ill thrift profile	£40.00	£40.00	•	•	•			•					•	•							•	•
Individual clinical profile	£30.00	£30.00					•		•	•	•	•	•	•	•	•		•	•	•	•	•
Herd profiles - see page 4 for prices																						
Fertility audit			•		•								•		•	•	•					
General audit			•		•			•					•	•	•	•	•				•	•
Herd metabolic profile			•		•					•	•		•	•	•	•	•	•				
Production audit													•	•	•	•	•					
Ewe nutrition															•	•						

• Haematology at the discounted rate of £11.50 per animal can be added to any of the above. Prices exclude VAT

## Urinalysis

Profile/test	Sample	Day(s) tested	Results due (working days)	Price/test + VAT	Accredited
Microscopic examination	Urine min 2ml	Daily	< 2 days	£15.30	A
Biochemical examination of urine	Urine min 1ml	Daily	< 1 day	£8.60	A
Calculi analysis	Bladder stone			£21.40	N
Comprehensive examination (includes biochemistry, microscopy, bacteriology and sensitivity)	Urine min 4ml	Daily	< 5 days	£37.50	A

## Skins

Profile/test	Sample	Day(s) tested	Results due (working days)	Price/test + VAT	Accredited
Microscopic examination only	Skin/hair plucks including roots and scabs	Daily	< 1 day	£15.30	A
Ringworm - microscopy, Wood's light cultures	Skin/hair plucks including roots and scabs	Daily	< 15 days	£19.50	A
Orf examination	Scab			£22.00	N
Comprehensive (microscopy, bacteriology and sensitivity & mycology)	Skin/hair plucks including roots and scabs	Daily	< 15 days	£35.00	A

On Farm Consultancy Service to Veterinary Practices £120 per hour. A call out fee of £40.00 is added to the above visits less than 2 hours.

