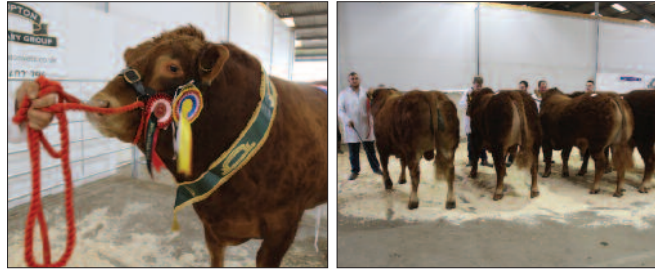


# LIVESTOCK AUCTIONS

Fatstock sales every Monday  
Storestock sales every Thursday

## SPECIAL SALES

Thursday 7<sup>th</sup> April Multi Breed Pedigree Cattle Show & Sale



Saturday 23<sup>rd</sup> April 18<sup>th</sup> Spring Rare Breeds Sale including cattle, sheep, pigs, poultry & waterfowl

Thursday 5<sup>th</sup> May Spring Store-stock Fayre including suckler cow & calf turnout sale

Saturday 1<sup>st</sup> October 36<sup>th</sup> Autumn Rare Breeds show & sale including cattle, sheep, pigs, poultry & waterfowl

Thursday 6<sup>th</sup> October Multi Breed pedigree cattle sale & pedigree sheep sale



Thursday 20<sup>th</sup> October Autumn Store-stock Fayre

Monday 5<sup>th</sup> December Christmas Show for cattle



Monday 12<sup>th</sup> December Christmas Show for sheep & pigs

Tuesday 13<sup>th</sup> December Christmas Show Dinner

Monday 19<sup>th</sup> December Christmas Poultry Sales  
or

Thursday 22<sup>nd</sup> December

Our Reward Card Scheme is available to all livestock vendors offering a range of rewards & discounts

Register on our website for reports, averages, entries & sales information



WEDNESDAY 2<sup>nd</sup> FEBRUARY 2022  
WEDNESDAY 8<sup>th</sup> FEBRUARY 2023



Approximately 250 stands  
All the latest machinery and equipment for agriculture, horticulture, ground-care, forestry, precision farming and estate management

Visit: [www.yams.uk.com](http://www.yams.uk.com)  
for up to date news and information

## SUNDAY MARKET & CAR BOOT SALE

Outside and undercover stalls; Gates open 9am to 12.30pm

## OVERNIGHT LORRY PARK

Open 4pm to 9am Monday to Friday  
Floodlit tarmac parking; security guard & CCTV;  
Café, showers, washroom, TV, bar

YORK AUCTION CENTRE

Yorkshire's Leading  
Multi Auction Centre



## 2022 SCHEDULE OF AUCTION SALES; MARKETS & EVENTS

For more information, email news, updates, market reports, catalogues, offers  
Register on our website at



[www.ylc.co.uk](http://www.ylc.co.uk)



York Auction Centre Murton York YO19 5GF

Tel: (01904) 489731 Fax: (01904) 489782

Email: [enquiries@ylc.co.uk](mailto:enquiries@ylc.co.uk)

## HOUSEHOLD CONTENTS & WORKSHOP & OUTDOOR TIMED ONLINE AUCTIONS

of  
household furniture & effects, workshop tools,  
bicycles, timber, garden equipment, trees & shrubs

14<sup>th</sup> to 18<sup>th</sup>  
**JANUARY**

15<sup>th</sup> to 19<sup>th</sup>  
**JULY**

11<sup>th</sup> to 15<sup>th</sup>  
**FEBRUARY**

19<sup>th</sup> to 23<sup>rd</sup>  
**AUGUST**

11<sup>th</sup> to 15<sup>th</sup>  
**MARCH**

16<sup>th</sup> to 20<sup>th</sup>  
**SEPTEMBER**

15<sup>th</sup> to 19<sup>th</sup>  
**APRIL**

21<sup>st</sup> to 25<sup>th</sup>  
**OCTOBER**

20<sup>th</sup> to 24<sup>th</sup>  
**MAY**

18<sup>th</sup> to 22<sup>nd</sup>  
**NOVEMBER**

17<sup>th</sup> to 21<sup>st</sup>  
**JUNE**

16<sup>th</sup> to 19<sup>th</sup>  
**DECEMBER**

Entries close for cataloguing on the Thursday, 8 days prior to the start of the sale

Register & bid online



## SADDLERY & TACK TIMED ONLINE AUCTIONS

18<sup>th</sup> to 22<sup>nd</sup> **MARCH**

27<sup>th</sup> to 31<sup>st</sup> **MAY**

26<sup>th</sup> to 30<sup>th</sup> **AUGUST**

28<sup>th</sup> **OCTOBER** to 1<sup>st</sup> **NOVEMBER**

Entries close for cataloguing on the Thursday, 8 days prior to the start of the sale

Register & bid online



## ANTIQUES, FINE ART, JEWELLERY & INTERIORS

Full calendar of collective and specialist sales  
in the modern purpose built sales  
and showroom complex

Open Monday to Friday 8.30am to 5.00pm  
for reception of lots, valuations, appraisals  
and house clearances

## MACHINERY SALES Tractors, fork lifts & loaders, trailers, plant & machinery, horticultural & groundcare, building materials

### TIMED ONLINE & LIVE HYBRID AUCTIONS

18<sup>th</sup> to 23<sup>rd</sup> **FEBRUARY**

Entries Close 10<sup>th</sup> February

25<sup>th</sup> to 30<sup>th</sup> **MARCH**

Entries Close 17<sup>th</sup> March

29<sup>th</sup> **APRIL** to 4<sup>th</sup> **MAY**

Entries Close 21<sup>st</sup> April

3<sup>rd</sup> to 8<sup>th</sup> **JUNE**

Entries Close 26<sup>th</sup> May

1<sup>st</sup> to 6<sup>th</sup> **JULY**

Entries Close 23<sup>rd</sup> June

5<sup>th</sup> to 10<sup>th</sup> **AUGUST**  
with main section for  
**16<sup>th</sup> VINTAGE BYGONE SALE**

Entries Close 28<sup>th</sup> July

2<sup>nd</sup> to 7<sup>th</sup> **SEPTEMBER**

Entries Close 25<sup>th</sup> August

7<sup>th</sup> to 12<sup>th</sup> **OCTOBER**

Entries Close 29<sup>th</sup> September

4<sup>th</sup> to 9<sup>th</sup> **NOVEMBER**

Entries Close 27<sup>th</sup> October

Register & bid online



## EXHIBITIONS, SHOWS & EVENTS

Excellent location with easy access from the A64  
Full catering facilities and free parking



Extensive outdoor  
hard standing areas  
together with  
large Show Field

Over 15,000 sq. ft.  
indoor  
Exhibition Hall



WiFi and internet  
connections

Catering for all  
requirements including  
100 seater cafeteria  
and licensed bar

